

# S'MESH PLASTIC CHAIR REMOVABLE TABLET ATTACHED TO FRAME

Design Alberto Basaglia Natalia Rota Nodari



Version with the new trapezoidal tablet in ABS, designed to be attached along the side of the seat inside a metal bush. This new version lends itself easily to intensive use. It has in fact passed in the CATAS laboratories the level 2 required by the EN 16139:2013 standard, which guarantees high standards of solidity and safety. Another big new is a special trolley, created ad hoc to make the storage of the removable tablets more convenient and tidier when you are done using them, and thus allow the chairs to be stacked. The trolley can store the HPL and ABS tablets with their joint, for a maximum of 60 and 30 pieces respectively.

## FINISHES

### ARMREST



Jet Black - RAL 9005



Signal White - RAL 9003



Window Grey - RAL 7040

### BACK



Window Grey - RAL 7040

Signal White - RAL 9003

Jet Black - RAL 9005

## SEAT

---



Signal White - RAL 9003



Window Grey - RAL 7040



Jet Black - RAL 9005

## ACCESSORIES



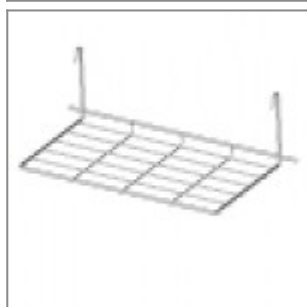
Black painted chair trolley for skid chairs



Short linking device w/handle, for Ø11 rod tube chair frames without arms



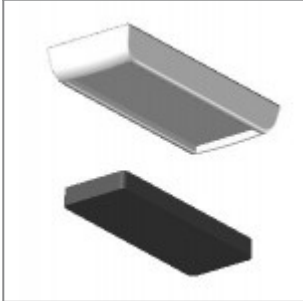
Long linking device w/handle, for Ø11 rod tube chair frames with arms and writing tablet



Chrome metal basket for laFilò skid frames



Plastic sliding cap glide for soft and rough surfaces suitable for rod tube frames glides



Plastic cap with felt sticker for delicate floor coverings suitable for rod tube frames glides

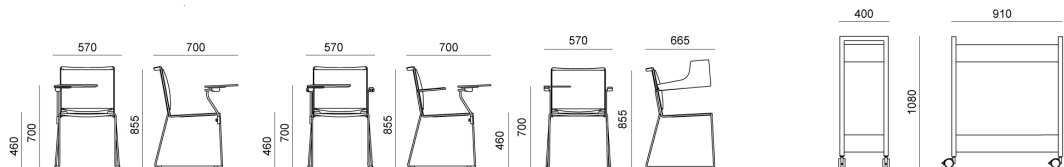


Black painted trolley for writing tablets. Capacity of 60 pcs for type FOTV10PXX/FOTV20PXX; 30 pcs type ZATV30P90/ZATV40P90

## DIMENSIONS

**S'MESH** PLASTIC | SOFT . Design Basaglia + Rota Nodari

**DIEMMEBI**<sup>®</sup>



SEDIA CON SCRITTOIO + CARRELLO PORTA TAVOLETTE | CHAIR WITH REMOVABLE WRITING TABLET + TROLLEY FOR WRITING TABLETS