

# VOLÉE NET PLASTIC CHAIR Design Angelo Pinaffo



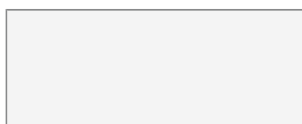
## EXCLUSIVE DISTRIBUTION.

Designed by the company's R&D department in collaboration with designer Angelo Pinaffo, its key elements are strength and endurance, a performance achieved through the use of a reliable high-density stacking frame. VOLÉE NET features a comfortable mesh back, as well as many frame options and accessories, to become the ideal solution for all public spaces.

## FINISHES

### FRAME

---



Signal White - RAL 9003

### BACK

---



Jet Black - RAL 9005

## SEAT

---



Window Grey - RAL 7040



Signal White - RAL 9003

## SUPPORTS

---



Signal White - RAL 9003



Window Grey - RAL 7040

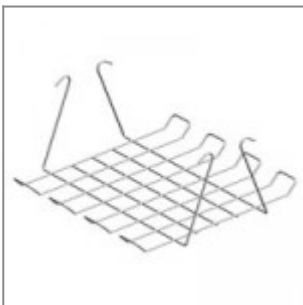


Jet Black - RAL 9005

## ACCESSORIES



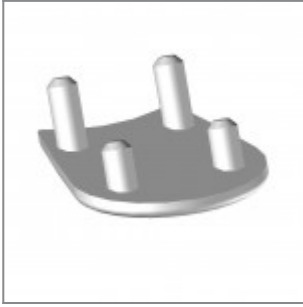
Black painted metal trolley, complete of castors



Black metal basket for chair Versa/Flou



Black plastic spacer / linking device for four legged chairs (2 pcs per chair are needed)



Plastic sliding cap glide for soft and rough surfaces (useful for Flou, laMia and Volée frames)



Plastic cap with felt sticker for delicate floor coverings (useful for Flou, laMia and Volée frames)



Chrome metal insert for Volée arm



Aluminium painted metal insert for Volée arm



Black painted metal insert for Volée arm



White painted metal insert for Volée arm



Red plastic arm-pad Volée pantone 201C UV-resistant 300 Klangley



Blue plastic arm-pad Volée pantone 294C UV-resistant 300 Klangley



Grey plastic arm-pad Volée Ral 7040 UV-resistant 300 Klangley



Dark grey plastic arm-pad Volée Ral 7024 UV-resistant 300 Klangley



Black plastic arm-pad Volée UV-resistant 300 Klangley



White Ral 9003 plastic arm-pad Volée UV-resistant 300 Klangley

