

VOLÉE NET PLASTIC WRITING TABLET CHAIR Design Angelo Pinaffo



EXCLUSIVE DISTRIBUTION.

Designed by the company's R&D department in collaboration with designer Angelo Pinaffo, its key elements are strength and endurance, a performance achieved through the use of a reliable high-density stacking frame. VOLÉE NET features a comfortable mesh back, as well as many frame options and accessories, to become the ideal solution for all public spaces.

FINISHES

FRAME



Signal White - RAL 9003

ARMREST



Jet Black - RAL 9005

Signal White - RAL 9003

Window Grey - RAL 7040

BACK



Jet Black - RAL 9005

SEAT



Window Grey - RAL 7040



Signal White - RAL 9003

SUPPORTS



Signal White - RAL 9003



Window Grey - RAL 7040

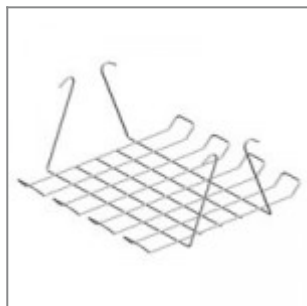


Jet Black - RAL 9005

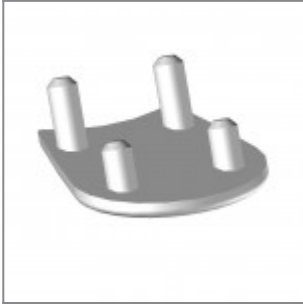
ACCESSORIES



Black painted metal trolley, complete of castors



Black metal basket for chair Versa/Flou



DIMENSIONS

VOLÉE PLASTIC | NET PLASTIC | EASY SOFT | SOFT | NET SOFT . Design Angelo Pinaffo

DIEMMEBI®

