

## ALINA NET CHAIR Design Diemmebi R&D



Family of chairs with epoxy-coated or chrome-plated metal frame. Seat and back come in wood or to be upholstered. Available also with seat to be upholstered and mesh back. Wide range of accessories available. Ideal for waiting areas, conference rooms and also as a visitor chair.

### ACCESSORIES



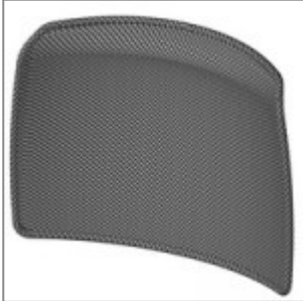
Right polyurethane arm Alina, facing the chair



Left polyurethane arm Alina, facing the chair



Left polyurethane arm Alina for writing tablet, facing the chair



Alina back metal frame with black mesh



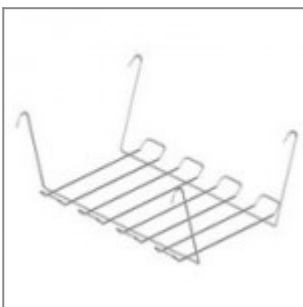
Service trolley for chairs, complete with castors



Short liking device for chair or 1 arm and writing tablet



Long liking device for 2 arms chair and writing tablet



Black metal basket



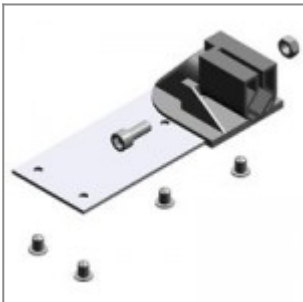
Right-hand antipanic joint for writing tablet modd. ZATV10P90, ZATV10L06



Left/Right-hand antipanic writing tablet in varnished beech, suitable with ZASN10P90, ZASN20P90



Left/Right-hand antipanic writing tablet in black ABS, suitable with ZASN10P90, ZASN20P90



Nylon joint with fixing metal plate for writing tablet modd. ZTF2635, ZTF2635DX, ZTP2635



Right-hand varnished beech wood writing tablet, suitable with joint cod. ZST15M

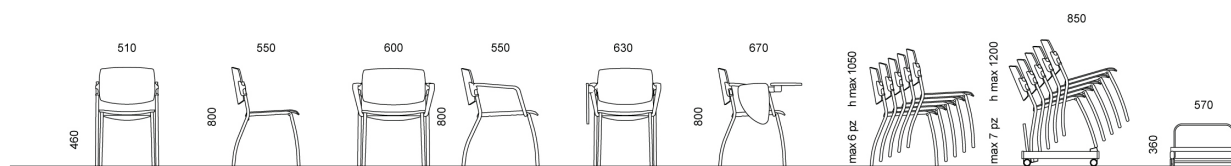


Black PS writing tablet, right-hand, suitable with joint cod. ZST15M

# DIMENSIONS

ALINA SOFT | NET . Design Diemmebi R&D

DIEMMEBI®



SEDIA CON E SENZA BRACCIOLI E SCRITTOIO | CHAIR WITH OR WITHOUT ARMS AND WRITING TABLET