

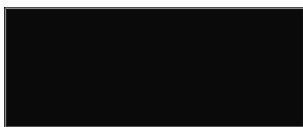
MULTI EASY SOFT CASTORS CHAIR Design Diemmebi R&D



Family of chairs with epoxy-coated or chromed metal frame. Multi features injection molded polypropylene seat and back. The range also includes the upholstered version to add extra comfort to the chair. Many accessories are available to make Multi an ideal solution for waiting areas, conference rooms and offices.

FINISHES

BACK



Jet Black - RAL 9005



Signal White - RAL 9003



Window Grey - RAL 7040

ACCESSORIES



Service trolley for chairs, complete with castors



Short liking device for chair or 1 arm and writing tablet



Long liking device for 2 arms chair and writing tablet



Right polyurethane arm Alina, facing the chair



Left polyurethane arm Alina for writing tablet, facing the chair



Right-hand antipanic joint for writing tablet modd. ZATV10P90, ZATV10L06



Left/Right-hand antipanic writing tablet in black ABS, suitable with ZASN10P90, ZASN20P90



Nylon joint with fixing metal plate for writing tablet modd. ZTF2635, ZTF2635DX, ZTP2635



Black PS writing tablet, right-hand, suitable with joint cod. ZST15M



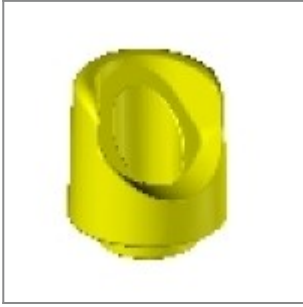
Black plastic pair of Multi arms



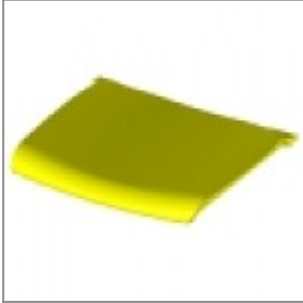
Grey plastic pair of Multi arms



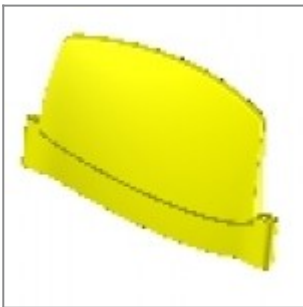
White plastic pair of Multi arms



Black plastic adapter Multi for polyurethane arms



Black fireproof polypropylene seat, not suitable for cantilever frame

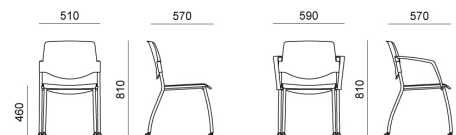


Black fireproof polypropylene Multi back

DIMENSIONS

MULTI PLASTIC | EASY SOFT | SOFT . Design Diemmebi R&D

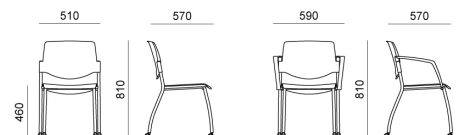
DIEMMEBI[®]



SEDIA CON RUOTE | CHAIR WITH CASTORS

MULTI PLASTIC | EASY SOFT | SOFT . Design Diemmebi R&D

DIEMMEBI[®]



SEDIA CON RUOTE | CHAIR WITH CASTORS