

## FLOU WOOD BENCH Design Diemmebi R&D



Family of chairs with epoxy-coated or chrome-plated metal frame.

Seat and back made of wood or injection moulded polypropylene, also available in the flame retardant version.

In the moulded versions made of plastic material, back and seat inners can be upholstered and added for more comfort.

Wide range of accessories available.

Ideal for public spaces in general

### ACCESSORIES



Flou aluminium painted arm with ABS arm-rest for writing tablet, left facing the chair



Flou chromed arm with ABS arm-rest for writing tablet, left facing the chair



Aluminium painted arm Flou with ABS arm-rest



Flou black painted arm with ABS arm-rest for writing tablet, left facing the chair



Chrome arm Flou with ABS arm-rest



Black painted arm Flou with ABS arm-rest



Right-hand antipanic joint for writing tablet modd. ZATV10P90, ZATV10L06



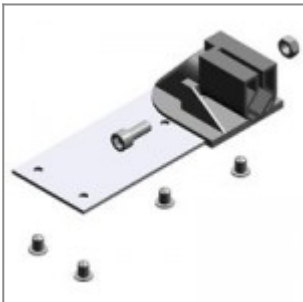
Left-hand antipanic joint for writing tablet modd. ZATV10P90, ZATV10L06



Left/Right-hand antipanic writing tablet in varnished beech, suitable with ZASN10P90, ZASN20P90



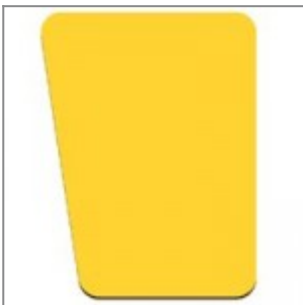
Left/Right-hand antipanic writing tablet in black ABS, suitable with ZASN10P90, ZASN20P90



Nylon joint with fixing metal plate for writing tablet modd. ZTF2635, ZTF2635DX, ZTP2635



Right-hand varnished beech wood writing tablet, suitable with joint cod. ZST15M



Left-hand varnished beech wood writing tablet, suitable with joint cod. ZST15M

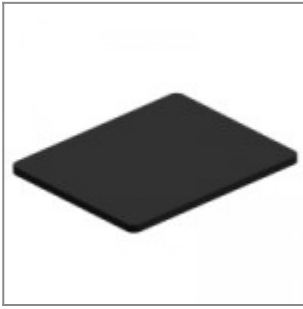


Table top for bench 450x500, bicoloured black and grey

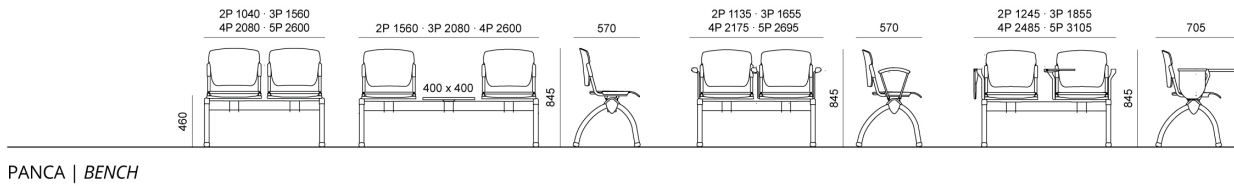


Black PS writing tablet, right-hand, suitable with joint cod. ZST15M

## DIMENSIONS

FLOU PLASTIC | SOFT | WOOD . Design Diemmebi R&D

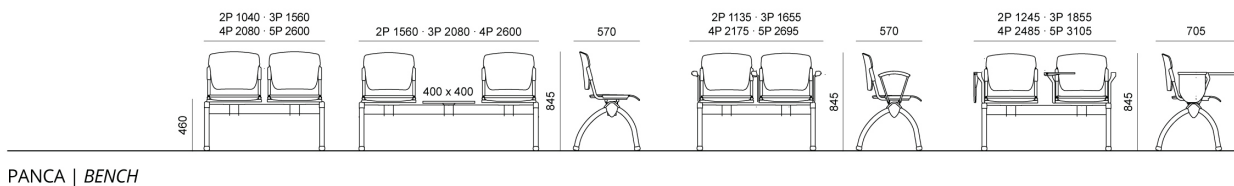
DIEMMEBI®



PANCA | BENCH

FLOU PLASTIC | SOFT | WOOD . Design Diemmebi R&D

DIEMMEBI®



PANCA | BENCH