

# laFILÒ BENCH Design Alberto Basaglia Natalia Rota Nodari



Family of chairs with epoxy-coated or chrome-plated metal frame. Injection moulded polypropylene seat and back with anti-UV treatment. Flame retardant version available. Both the back and the seat or the seat only can be padded. Also available with armrests and various accessories. Ideal for public areas in general in the skid base version. Four legs version suitable for home environments.

## FINISHES

### BACK



Signal White - RAL 9003



Jet Black - RAL 9005



Cobalt Blue - RAL 5013



Window Grey - RAL 7040



Carmine Red - RAL 3002



Pantone - Sand

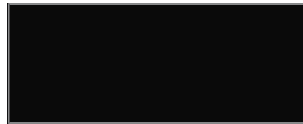


Pantone - 375C

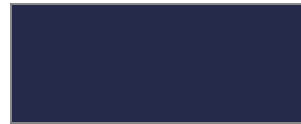
### SEAT



Signal White - RAL 9003



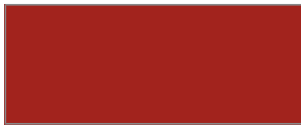
Jet Black - RAL 9005



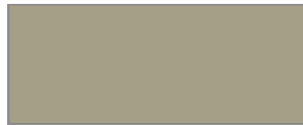
Cobalt Blue - RAL 5013



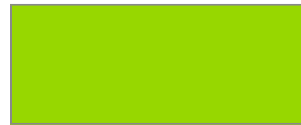
Window Grey - RAL 7040



Carmine Red - RAL 3002



Pantone - Sand



Pantone - 375C

## ARMREST



Signal White - RAL 9003



Jet Black - RAL 9005



Cobalt Blue - RAL 5013



Window Grey - RAL 7040



Carmine Red - RAL 3002

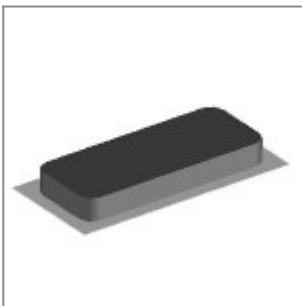


Pantone - Sand



Pantone - 375C

## ACCESSORIES



Brown single felt mm12x30x4 for laKendò and Eclipse four legged frame glide



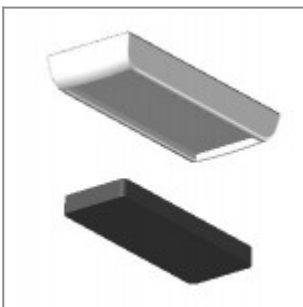
Short linking device w/handle, for Ø11 rod tube chair frames without arms



Long linking device w/handle, for Ø11 rod tube chair frames with arms and writing tablet



Plastic sliding cap glide for soft and rough surfaces suitable for rod tube frames glides



Plastic cap with felt sticker for delicate floor coverings suitable for rod tube frames glides

## DIMENSIONS

**laFILÒ** PLASTIC | SOFT . Design Basaglia + Rota Nodari

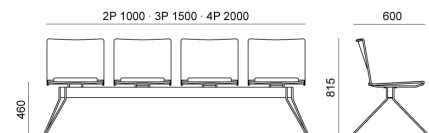
**DIEMMEBI®**



PANCA | *BENCH*

**laFILÒ** PLASTIC | SOFT . Design Basaglia + Rota Nodari

**DIEMMEBI®**



PANCA | *BENCH*