

# laKENDÒ NET CHAIR Design Angelo Pinaffo



The family of seating “LaKendo” is designed to offer an adaptable system for multifunctional uses. The wide range of configuration gives the seat a natural versatility for working, community, studying/learning, entertainment and contract spaces. The innovation in concept and constructive solutions guarantee a high level of comfort and the respect of ergonomics parameters as well as a high level in strength for a prolonged use. The design is essential but looks carefully to every single detail. The metal frame has a peculiar section’s profile which makes the seat more resistant and supports others specific features. Its multifunctional uses enable several easy configurations: with polypropylene, padded and upholstered seat and back or back in mesh. The frame is set for arms, tip-up seat, wheels and supports sled and bench versions. Among the accessories is available the tablet for both arms. The family is completed by a wide range of customisation in finishes and colours. The seats are both horizontally and vertically stackable for a rational use of space also in configurations with writing tablet and frame with wheels.

## FINISHES

### SUPPORTS

---



Window Grey - RAL 7040

### BACK

---



Window Grey - RAL 7040



Jet Black - RAL 9005

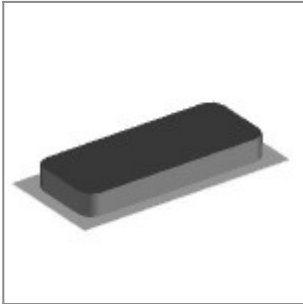
## ACCESSORIES



Black plastic male and female linking device for armless laKendò chair



laKendò black painted chair trolley with castors



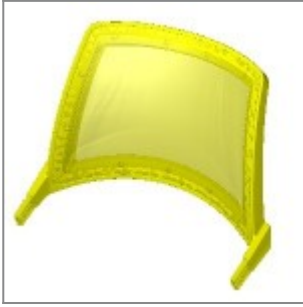
Brown single felt mm12x30x4 for laKendò and Eclipse four legged frame glide



Black painted spacer bar for laKendò chairs (screws not included)



Black back laKendò with black mesh assembled

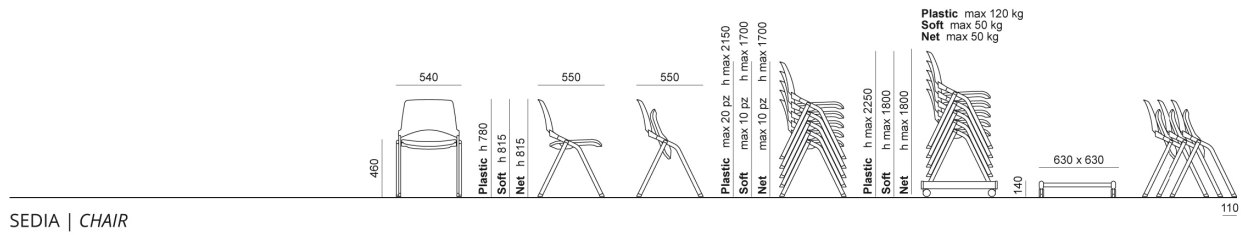


Grey back laKendò with grey mesh assembled

## DIMENSIONS

laKENDÒ PLASTIC | SOFT | NET . Design Angelo Pinaffo

DIEMMEBI®



SEDIA | CHAIR

110