

# S'MESH PLASTIC ARMCHAIR Design Alberto Basaglia Natalia Rota Nodari



When we were designing S'mesh we thought about the individual occasions when we spend time sitting: in the office, in waiting rooms, during conferences. S'mesh was designed to provide the ultimate comfort and a high level of industrialization. This product is assembled without screws and features a patented interlocking system, which keeps costs down and facilitates disposal at the end of product life. The perimeter structure is made of steel rod, the seat and the backrest are made of polypropylene and come in white, black and grey. The backrest mesh is available in black, white, grey and on request also green, red, blue and beige.

## FINISHES

### ARMREST



Jet Black - RAL 9005



Signal White - RAL 9003



Window Grey - RAL 7040

### BACK



Window Grey - RAL 7040

Signal White - RAL 9003

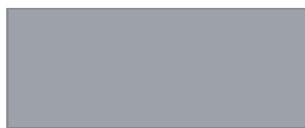
Jet Black - RAL 9005

## SEAT

---



Signal White - RAL 9003



Window Grey - RAL 7040



Jet Black - RAL 9005

## FRAME

---



Jet Black - RAL 9005



Signal White - RAL 9003

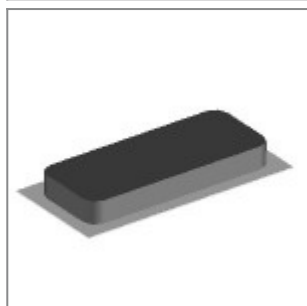


White Aluminium - RAL  
9006

## ACCESSORIES



Black painted chair trolley for skid chairs



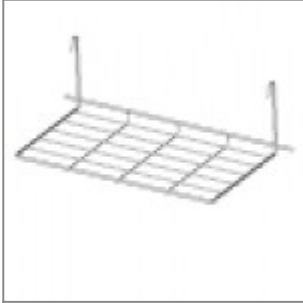
Brown single felt mm12x30x4 for laKendò and Eclipse four legged frame glide



Short linking device w/handle, for Ø11 rod tube chair frames without arms



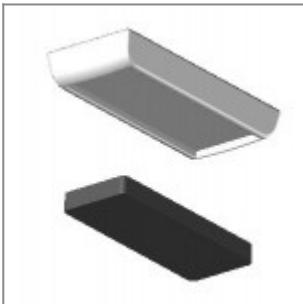
Long linking device w/handle, for Ø11 rod tube chair frames with arms and writing tablet



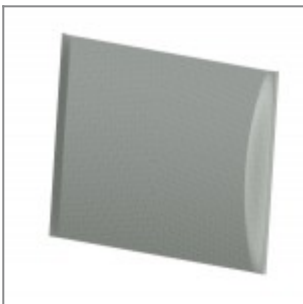
Chrome metal basket for laFilò skid frames



Plastic sliding cap glide for soft and rough surfaces suitable for rod tube frames glides



Plastic cap with felt sticker for delicate floor coverings suitable for rod tube frames glides



Black fire retardant mesh back for S'mesh



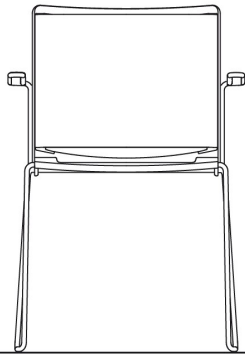
Grey fire retardant mesh back for S'mesh



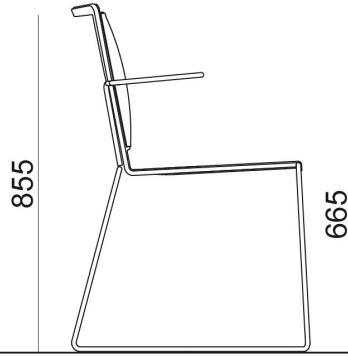
White fire retardant mesh back for S'mesh

## DIMENSIONS

570



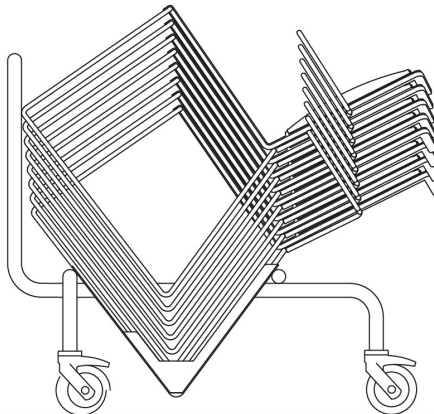
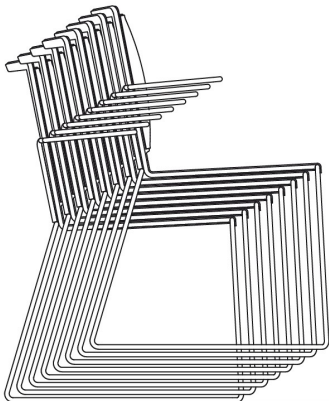
595



plastic max 20  
soft max 15

plastic max 40  
soft max 15  
max 350 kg

1045



690

