

S'MESH SOFT CHAIR REMOVABLE TABLET ATTACHED TO ARM

Design Alberto Basaglia Natalia Rota Nodari



When we were designing S'mesh we thought about the individual occasions when we spend time sitting: in the office, in waiting rooms, during conferences. S'mesh was designed to provide the ultimate comfort and a high level of industrialization. This product is assembled without screws and features a patented interlocking system, which keeps costs down and facilitates disposal at the end of product life. The perimeter structure is made of steel rod, the seat and the backrest are made of polypropylene and come in white, black and grey. The backrest mesh is available in black, white, grey and on request also green, red, blue and beige.

FINISHES

ARMREST



Jet Black - RAL 9005



Signal White - RAL 9003



Window Grey - RAL 7040

BACK



Window Grey - RAL 7040

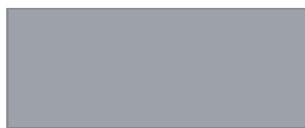
Signal White - RAL 9003

Jet Black - RAL 9005

SEAT



Signal White - RAL 9003



Window Grey - RAL 7040



Jet Black - RAL 9005

ACCESSORIES



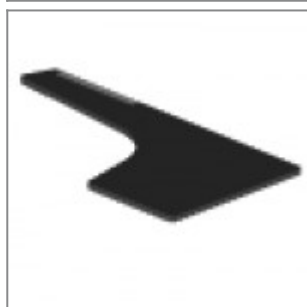
Black painted chair trolley for skid chairs



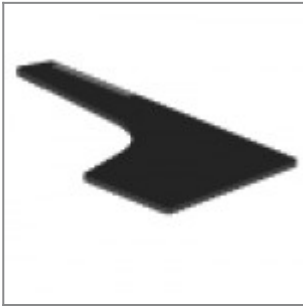
Long linking device w/handle, for Ø11 rod tube chair frames with arms and writing tablet



Chrome metal basket for laFilò skid frames



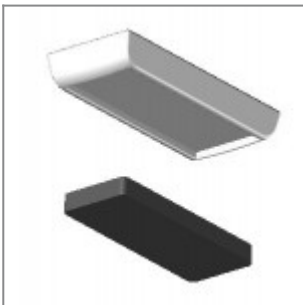
Black HPL laFilò writing tablet, removable from the arm, right facing the chair (suitable for joint FOSN10A90)



White HPL laFilò writing tablet, removable from the arm, right facing the chair (suitable for joint FOSN10A90)



Plastic sliding cap glide for soft and rough surfaces suitable for rod tube frames glides



Plastic cap with felt sticker for delicate floor coverings suitable for rod tube frames glides

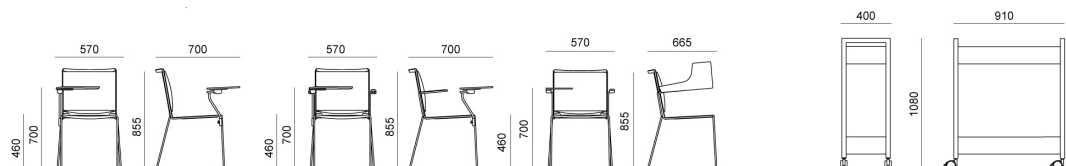


Black painted trolley for writing tablets. Capacity of 60 pcs for type FOTV10PXX/FOTV20PXX; 30 pcs type ZATV30P90/ZATV40P90

DIMENSIONS

S'MESH PLASTIC | SOFT . Design Basaglia + Rota Nodari

DIEMMEBI®



SEDIA CON SCRITTOIO + CARRELLO PORTA TAVOLETTE | CHAIR WITH REMOVABLE WRITING TABLET + TROLLEY FOR WRITING TABLETS