

S'MESH PLASTIC BENCH Design Alberto Basaglia Natalia Rota Nodari



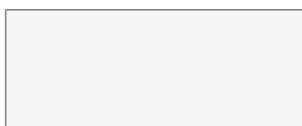
When we were designing S'mesh we thought about the individual occasions when we spend time sitting: in the office, in waiting rooms, during conferences. S'mesh was designed to provide the ultimate comfort and a high level of industrialization. This product is assembled without screws and features a patented interlocking system, which keeps costs down and facilitates disposal at the end of product life. The perimeter structure is made of steel rod, the seat and the backrest are made of polypropylene and come in white, black and grey. The backrest mesh is available in black, white, grey and on request also green, red, blue and beige.

FINISHES

BACK



Window Grey - RAL 7040



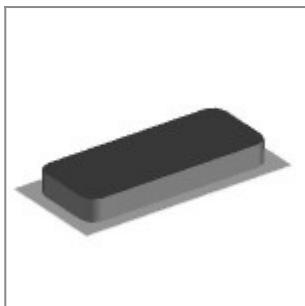
Signal White - RAL 9003



Jet Black - RAL 9005

SEAT



ACCESSORIES

Brown single felt mm12x30x4 for laKendò and Eclipse four legged frame glide



Short linking device w/handle, for Ø11 rod tube chair frames without arms



Long linking device w/handle, for Ø11 rod tube chair frames with arms and writing tablet



Plastic sliding cap glide for soft and rough surfaces suitable for rod tube frames glides



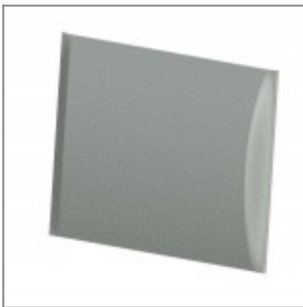
Plastic cap with felt sticker for delicate floor coverings suitable for rod tube frames glides



Black fire retardant mesh back for S'mesh



Grey fire retardant mesh back for S'mesh

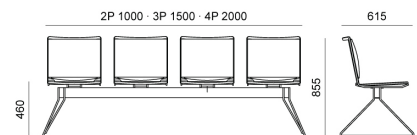


White fire retardant mesh back for S'mesh

DIMENSIONS

S'MESH PLASTIC | SOFT . Design Basaglia + Rota Nodari

DIEMMEBI[®]



PANCA | *BENCH*